



REAGAN
NATIONAL



DULLES
INTERNATIONAL

The Nation's Airports



@Reagan_Airport

@Dulles_Airport

@Dulles_Toll_Road



reaganairport

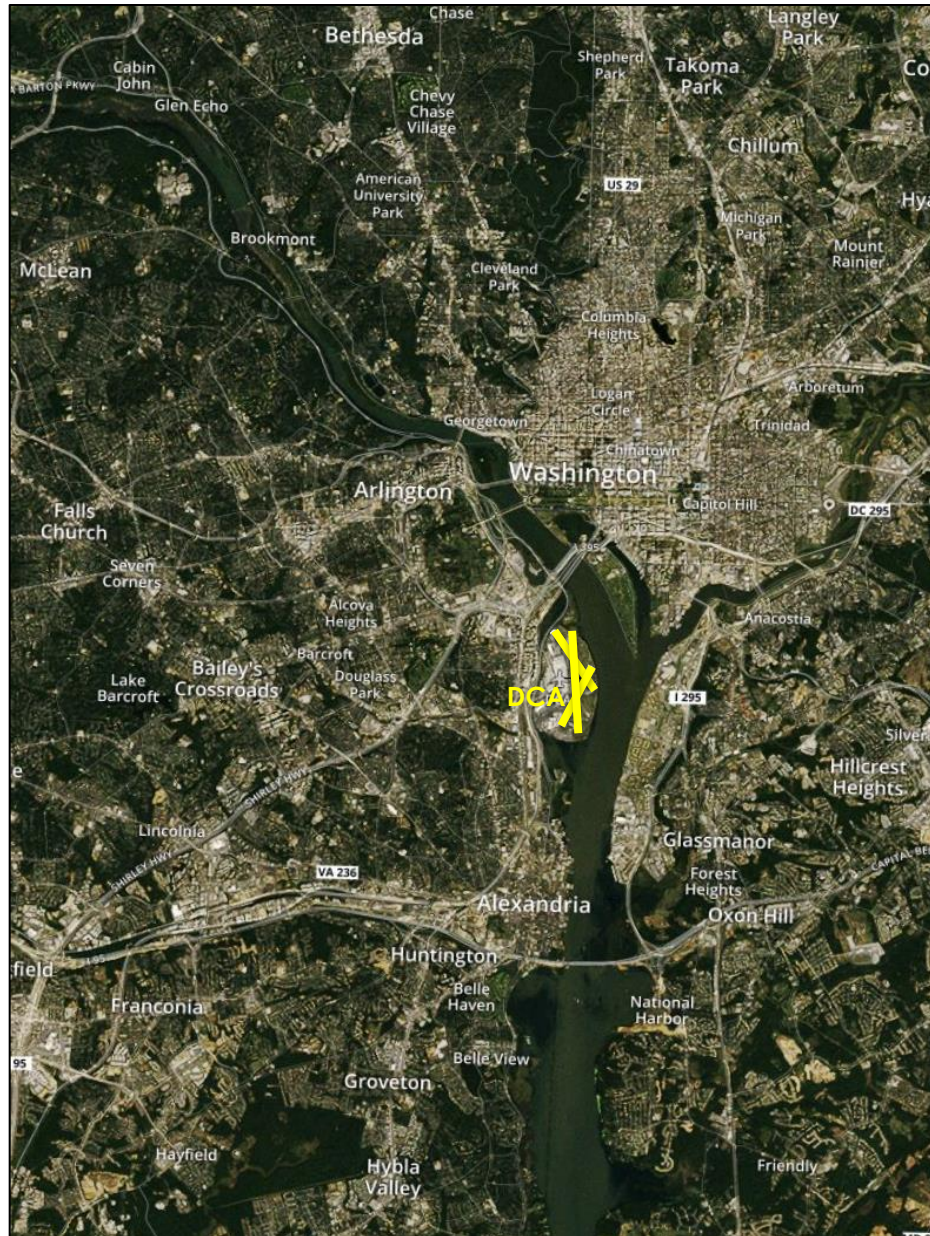
FlyDulles

dullestollroad

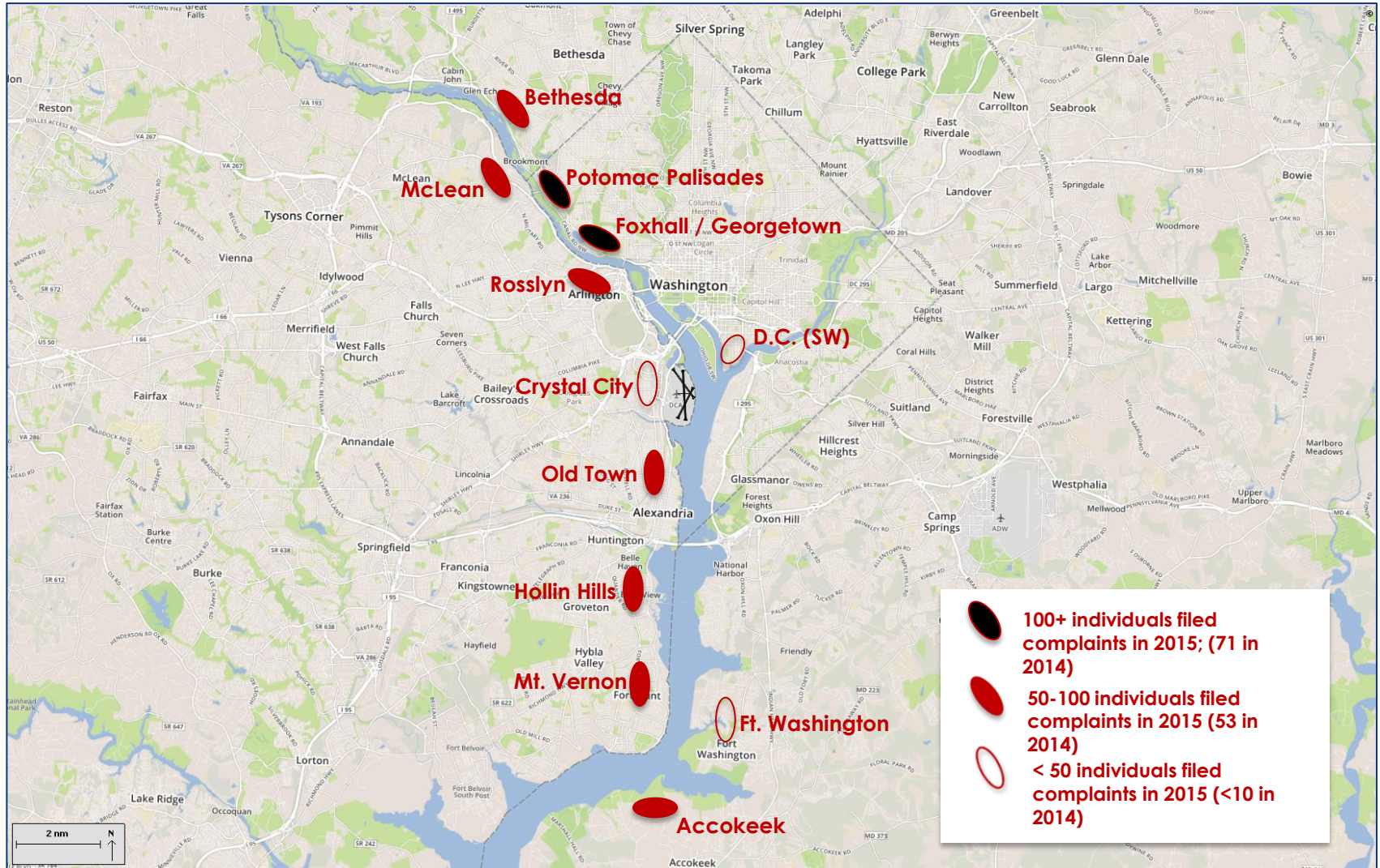


Reagan National (DCA)

- 860 acres
- Inner-city airport
- Adjacent to established communities



DCA: 2014 Noise Complaint Areas



Response to Noise Challenge

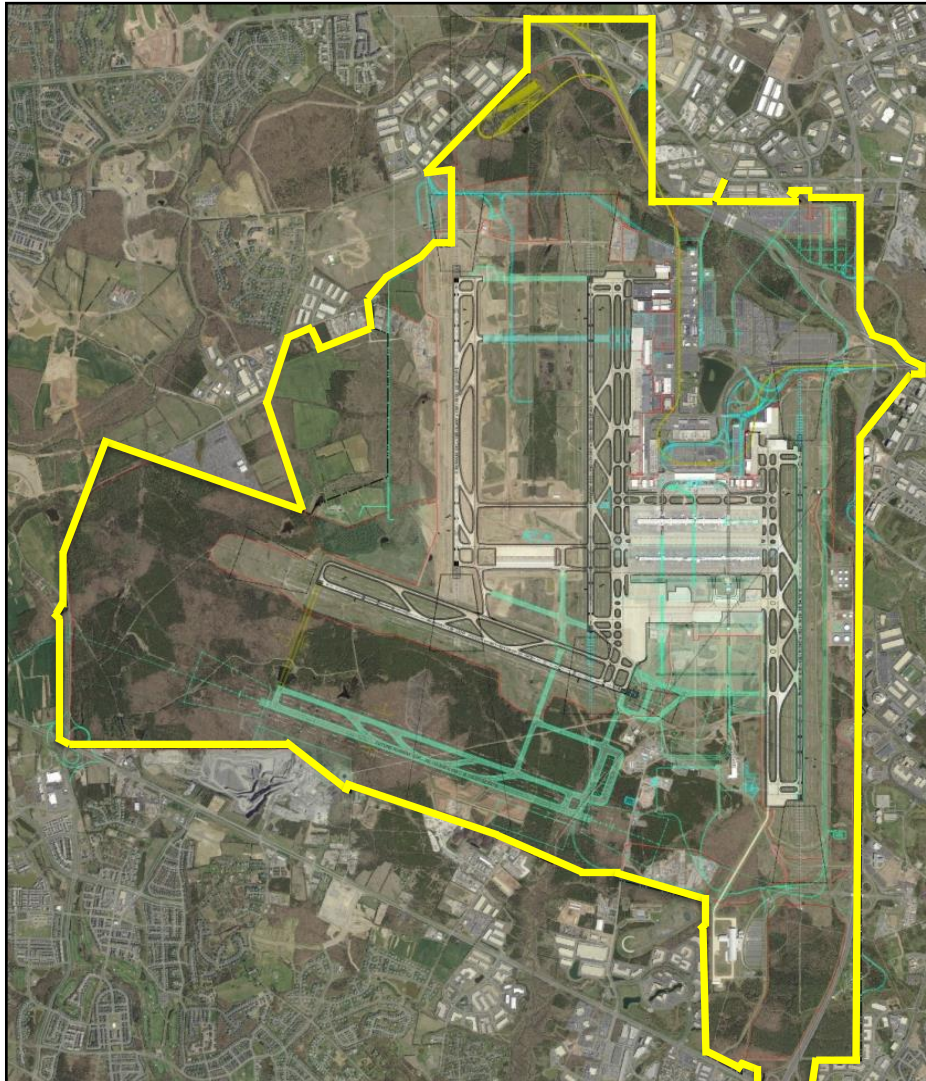


Community Noise Working Group

Airport Comparison

Dulles:

- 11, 573 acres
- 21.7 million passengers (2015)




Reagan National:


- 860 acres
- 23 million passengers (2015)

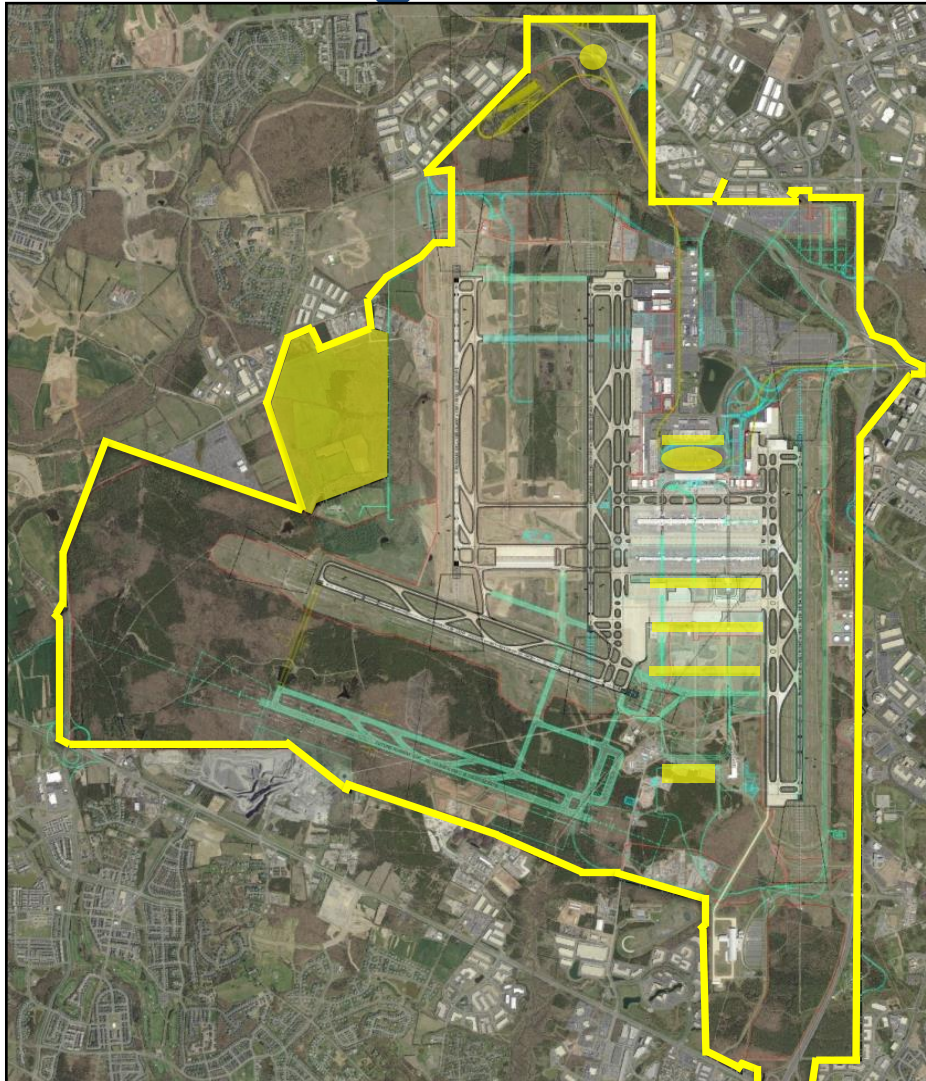
(Both airports to scale)

Dulles International (IAD) is Poised for Growth during the Next 50 Years

Legend:

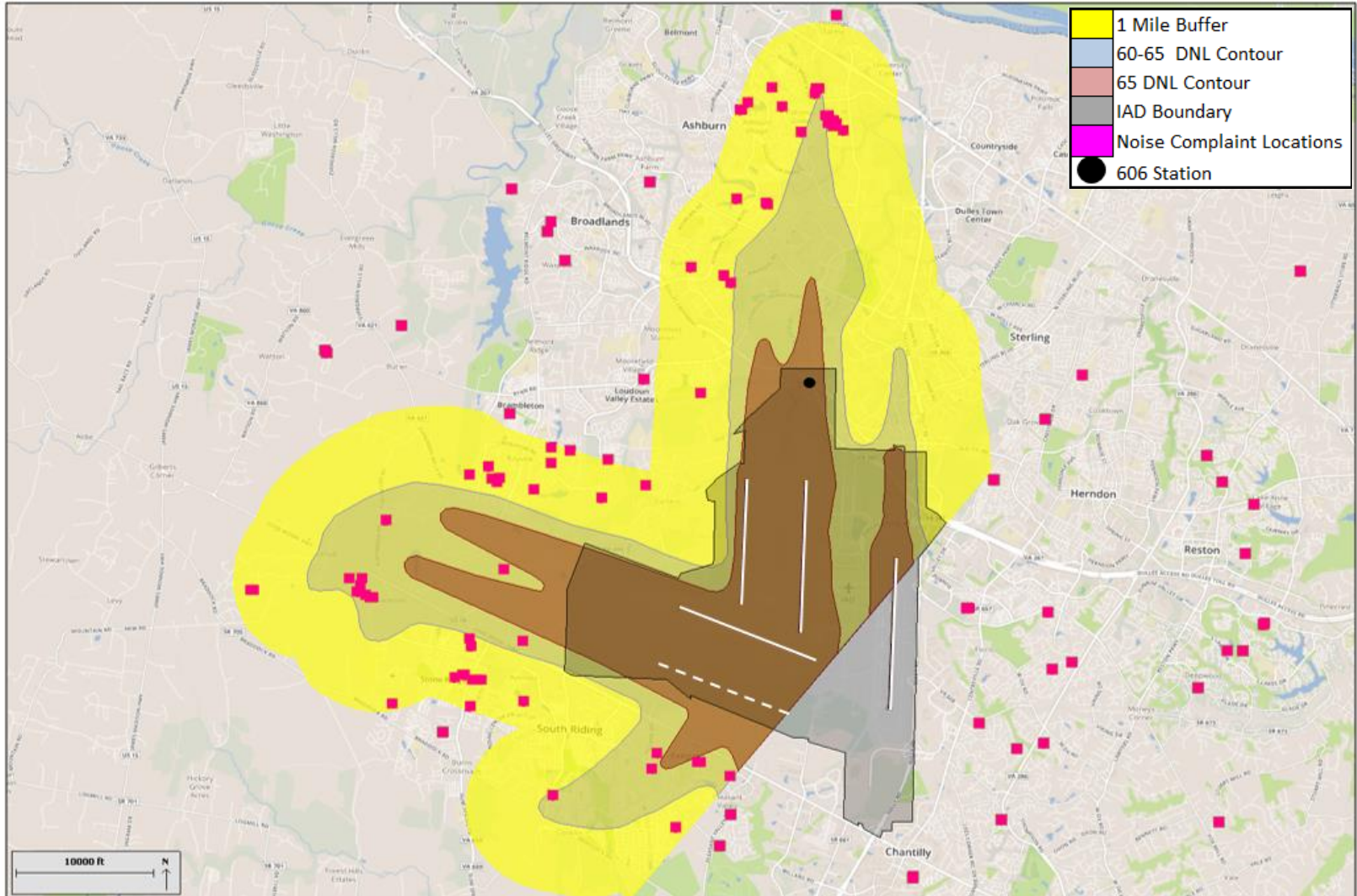
Future runway/taxiway improvements 

Future Infrastructure Development 

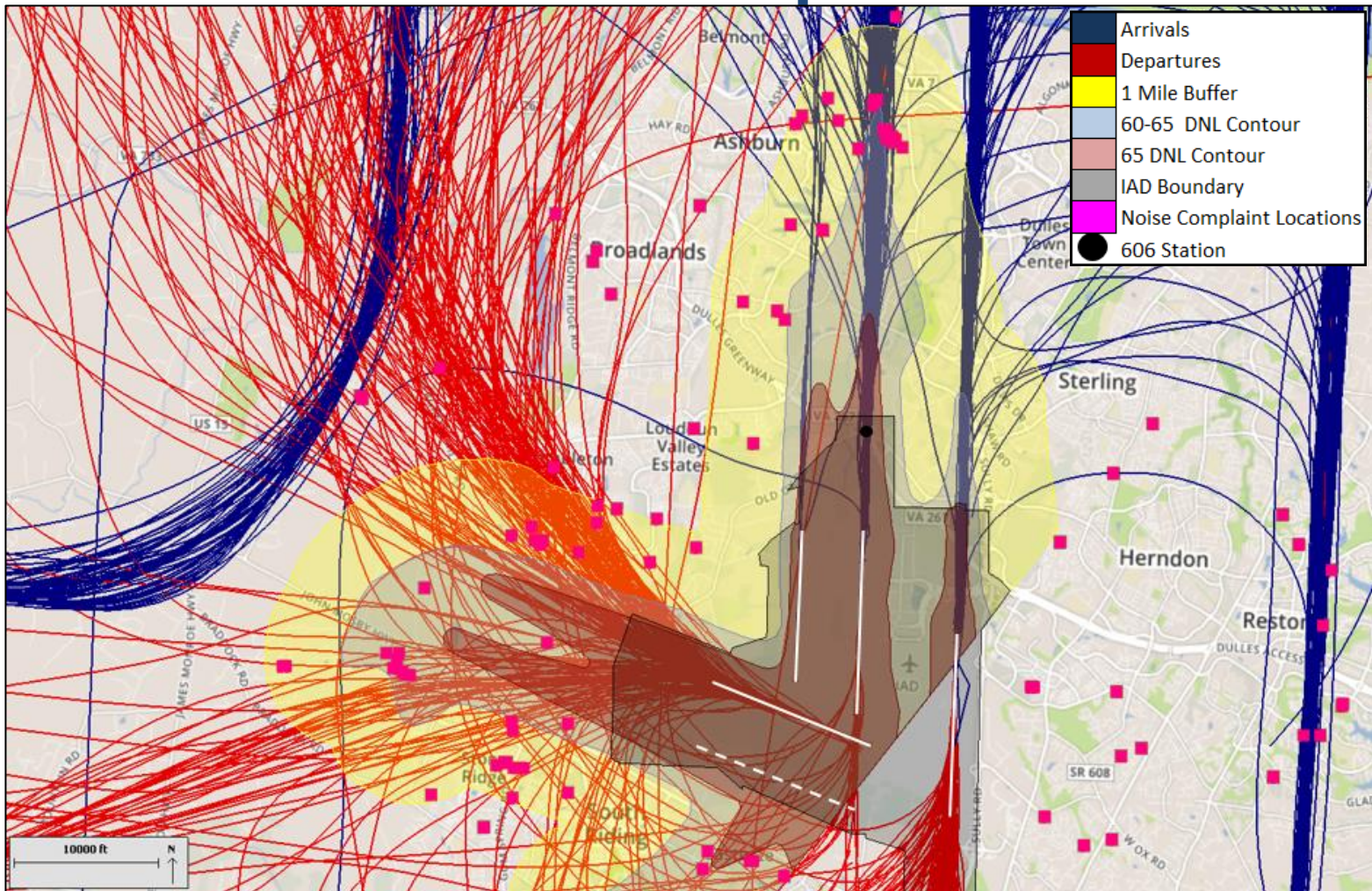


1. Saarinen Circle
2. Dulles Station
3. Loudoun Gateway
4. Western Lands
5. South Concourse

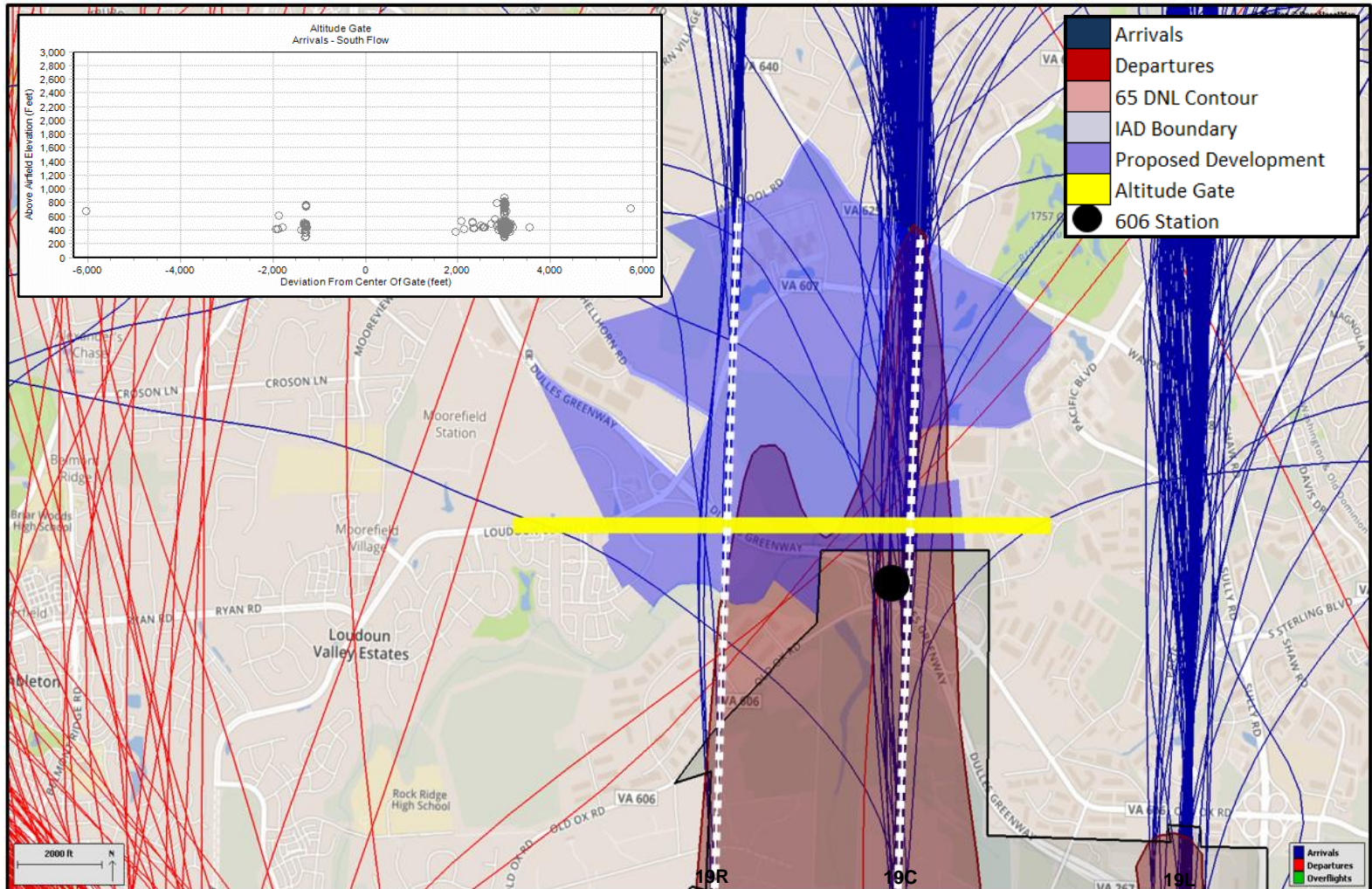
IAD: 2014 & 2015 Noise Complaints Locations



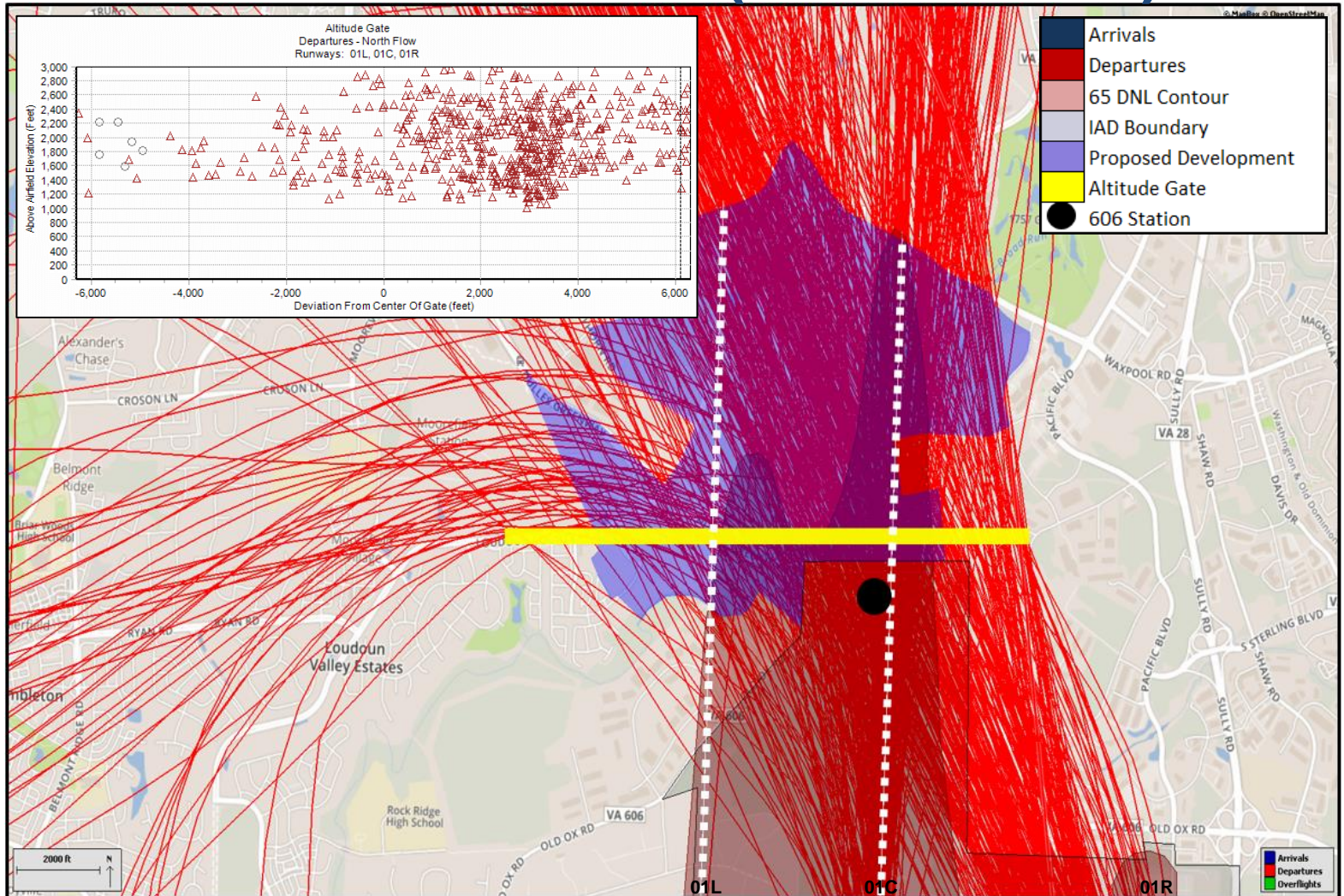
IAD: South Flow Arrivals & Departures with 2014 & 2015 Noise Complaint Locations



IAD: South Flow Arrivals near 606 Station with Altitude Gate (0 ft – 3000 ft)



IAD: North Flow Departures near 606 Station with Altitude Gate (0 ft – 3000 ft)





Key Recommendations – Loudoun Best Market Practices Study (September 16, 2015)

- Maintain Transit Related Employment Center policies and zoning
- Consider partnerships and opportunities for catalytic anchor uses
- Work with MWAA to encourage airport-compatible land use development
- Maintain existing policies to encourage commercial development at Ashburn Station Area
- Consider policy and zoning revisions to allow interim uses to help activate the station areas, provide income for property owners, and generate tax revenues



Summary

- MWAA is concerned about families living at the end of an active runway. Large aircraft, at full throttle, will fly directly over homes at low altitudes throughout the day and night.
- This will create significant “Quality of Life” issues. Residents will be concerned about safety and aircraft noise. They will demand restrictions on airport activity and growth.
- Dulles International is the leading economic generator in this region (VA, DC, MD). Restrictions on its growth will result in lost jobs and revenue for Fairfax & Loudoun County, Northern Virginia, the Commonwealth, as well the entire region. This is revenue that cannot be generated elsewhere.



REAGAN
NATIONAL



DULLES
INTERNATIONAL

Your Journey Begins With Us.



@Reagan_Airport

@Dulles_Airport

@Dulles_Toll_Road



reaganairport

FlyDulles

dullestollroad

