



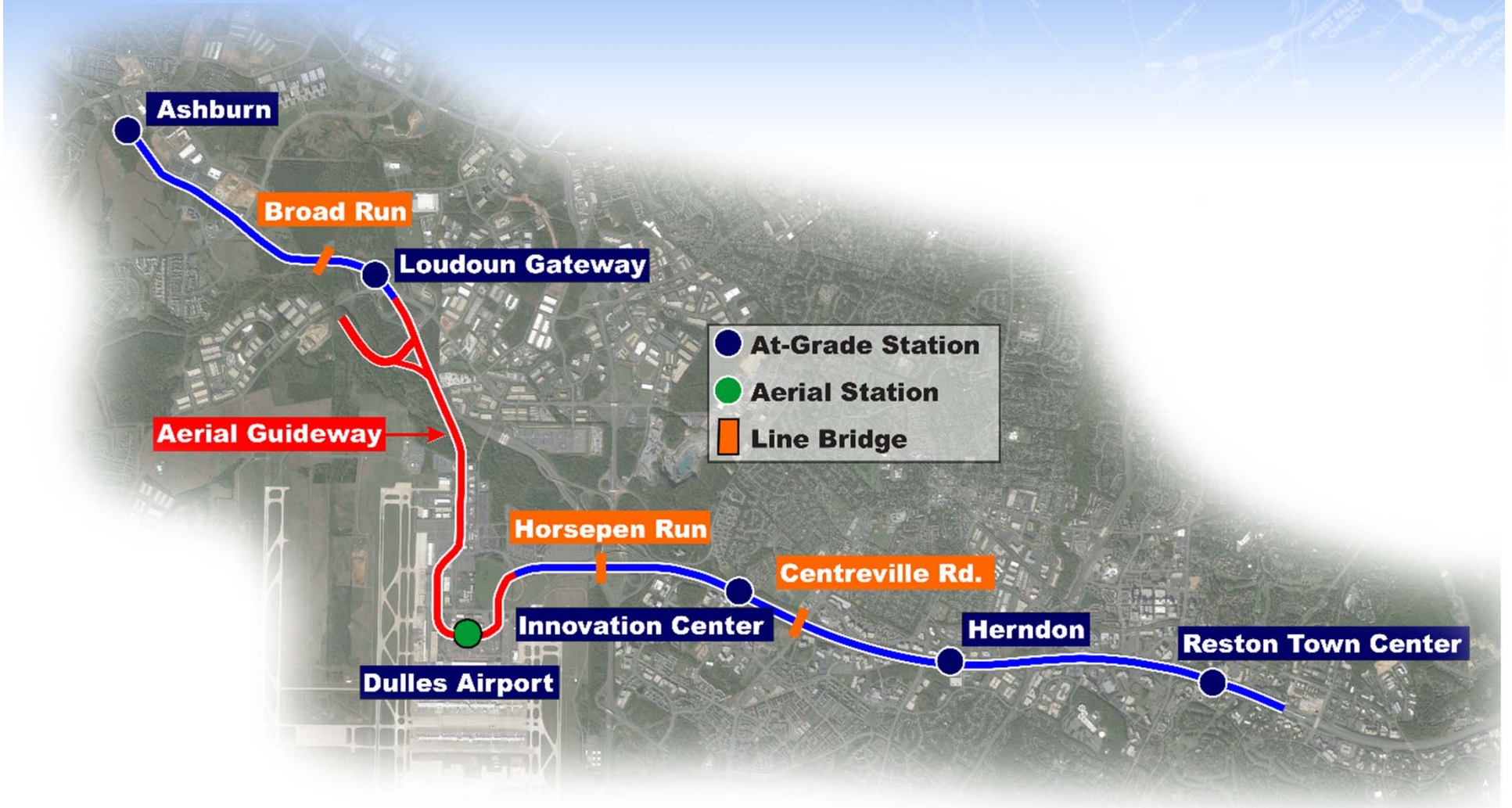
Dulles Matters II

Marcia McAllister
Communications Manager

May 11, 2016



Phase 2 Alignment




Phase 2

A light blue background map showing transit routes. Key labels include 'ROUTE 28', 'HERNDON-HORRICE', 'RESTON PARKWAY', 'WIEBLE AVENUE', 'PHASE I', 'WEST FALLS CHURCH', and 'EAST FALLS CHURCH'. The map shows a network of lines connecting various stations and areas.

- **Rolling toward completion in late 2019**
- **Expected to generate TOD in Reston, Herndon, Dulles area and eastern Loudoun**

Construction Status



Construction Status - 18%
Design Status - 96%
Overall Project Status- 30%

Major Current Activities

	Activity Underway	% Complete
• Design:		99%
• Aerial Guideway:		
• Drilled Shafts	169 of 197	86%
• Columns	149 of 191	78%
• Caps	124 of 179	69%
• Straddle Bents	2 of 8	25%
• Girders (84" and 72")	196 of 426	46%
• Decks	25 of 177	14%
• Stations:		
• Reston Town Center	Excavations & Foundations	
• Herndon	Enabling Work	
• Innovation Center	Precast & Steel	
• Dulles Airport	Excavations & Foundations	
• Loudoun Gateway	Enabling Work	
• Ashburn Station	Enabling Work	

Phase 2 Stations

- Similar to Wiehle-Reston East Station

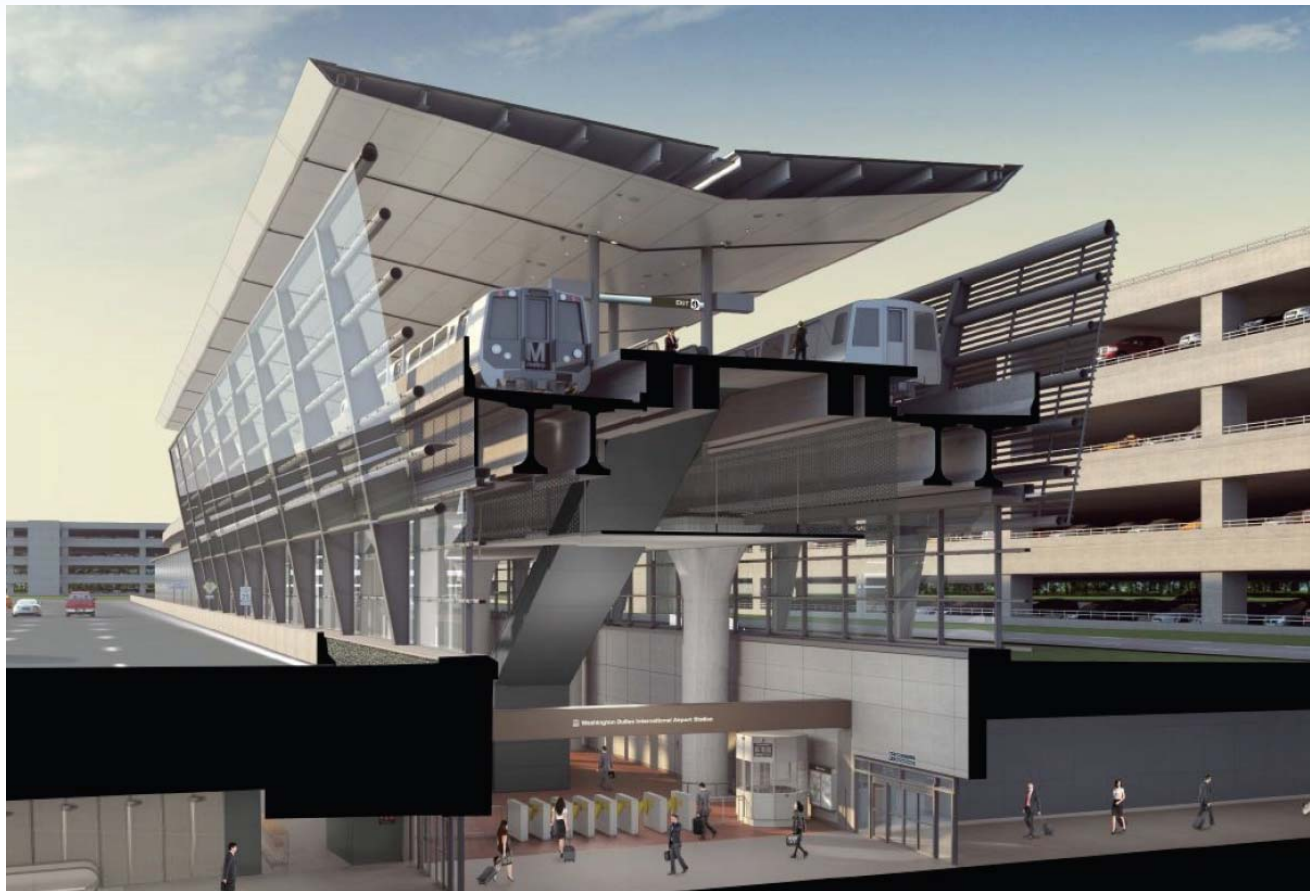


Structures along Autopilot Drive at Dulles Airport



Dulles Airport Location Details

- The aerial Dulles Airport Station is approximately 1,000 feet north of the terminal, adjacent to Garage 1 (North).
- The station will be linked to the terminal via an existing tunnel that has been temporarily closed for construction



Rendering of the proposed Metro station at Dulles Airport

Straddle Bent 2 Pour at Dulles Airport



Up Close: The Dulles Airport Station Site Is Beehive of Activity



Phase 2 Station Details

- **Reston Town Center Station:**

- No additional parking
- Bus drop-off/pickup (both entrances)
- Kiss & Ride (both entrances)
- 28 bicycle racks, 6 lockers on north side; 10 racks and five lockers on south side

- **Herndon Station:**

- Bus drop-off/pickup (south side only)
- Kiss & Ride (existing)
- Parking for approximately 3,500 cars (total including existing garage of 1,950 spaces)
- 35 bicycle racks on the north side; five lockers on the south side, 46 racks in garage

- **Innovation Center Station:**

- Bus drop-off/pickup (both entrances)
- Kiss & Ride (both entrances)
- Parking for approximately 2,000 cars (south side)
- Seven bicycle racks and five lockers on the north side; 45 racks in the garage on south side and five lockers

- **Loudoun Gateway Station:**

- 1 station entrance on north side of Dulles Greenway
- Pedestrian bridge crossing Dulles Greenway to north side
- Bus drop-off/pickup
- Kiss & Ride
- Parking for approximately 2,750 cars (includes existing 750 spaces at existing Dulles North Transit Center)
- 26 bike racks in the parking structure and five lockers

- **Ashburn Station:**

- Pedestrian bridges and station entrances from both sides of Dulles Greenway
- Bus drop-off/pickup (both sides) Kiss & Ride (both sides)
- Parking for approximately 3,000 cars (1,500 on each side)
- 24 bicycle racks, including 11 in the parking structure) and 5 bike lockers on the north side; 27 bicycle racks on the south side

Innovation Station Is Taking Shape



Looking Forward

- **Reston Town Center Station** – First tower crane erected; second planned for late spring/summer.
- **Herndon Station** – Upcoming utility work in Herndon-Monroe Park & Ride facility; cast-in-place concrete work begins this week.
- **Innovation Center Station** – Pre-cast erection will be done and pedestrian bridge work starts this summer.
- **Dulles Airport Station** – Continue foundation work; pre-cast erection to start mid-summer. Pedestrian tunnel utility work is ongoing.
- **Aerial Guideway** – Drilled shafts, columns, and pier caps. Girder installation and deck pours ongoing in yard leads. Airport straddle bent construction continues; Greenway straddle bent work begins this summer.
- **Loudoun Gateway Station** – Site clearing and heavy excavation ongoing through the spring.

TRACK - 2016

DIRECT FIXATION TRACK:
Summer 2016

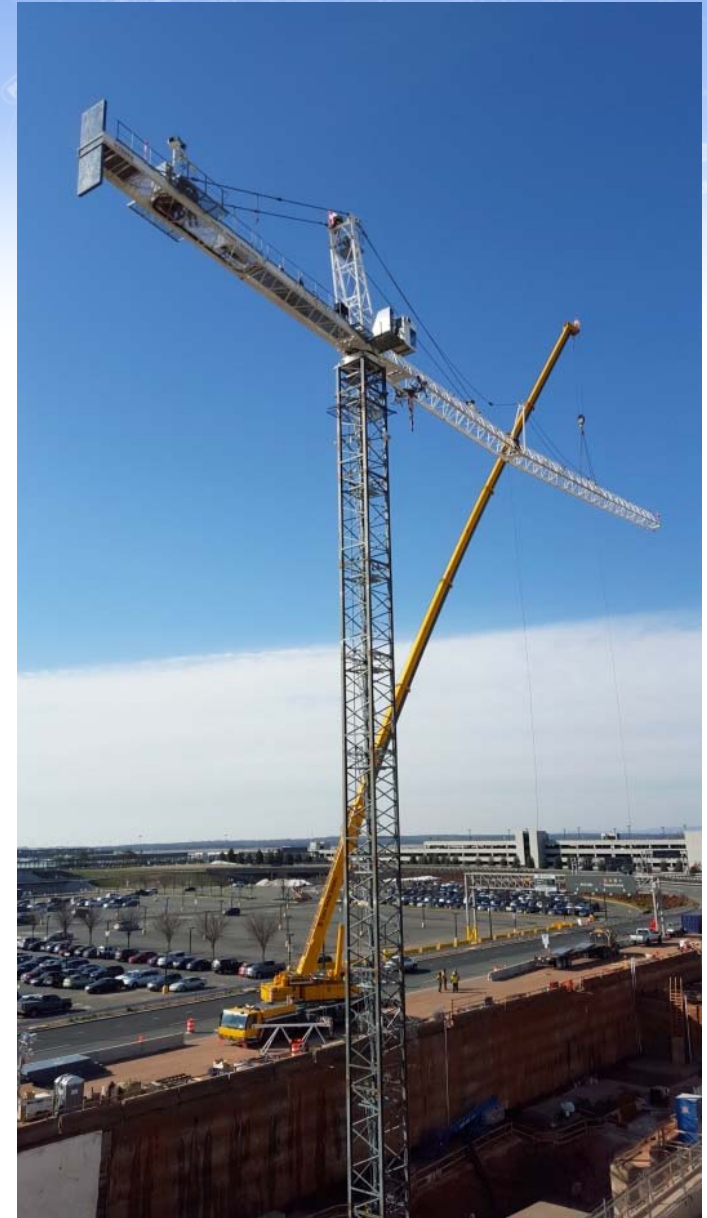


BALLASTED TRACK:
Fall 2016



Coming Along the alignment

- Utility, ductbank installation all along the alignment
- Tower cranes at Dulles, Innovation, Herndon and Reston stations
- 8 Straddle Bents



Challenges

- Hand-mining
- Building 3 stations on DIAAH simultaneously
- Minimize impact on airport operations
- Closing pedestrian tunnel for two years:
 - 1) Shuttles
 - 2) Significant outreach
- Changes to Herndon-Monroe Park & Ride Facility:
 - 1) Notifications
 - 2) Slug line detour





April 28, 2016

CONTACT: Marcia McAllister
 T: 703-572-0506
 C: 571-730-9117
Marcia.McAllister@dullesmetro.com

**Dulles Corridor Metrorail Project
 PHASE 2**

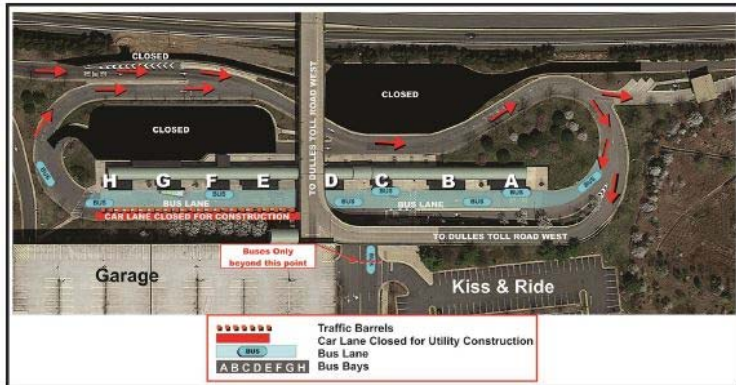
99

Utility Installation Work at Herndon-Monroe Park & Ride Will Close Car Lane Inside the Bus Traffic Loop

On or about Wednesday, May 4, 2016, Dulles Corridor Metrorail Project (DCMP) crews will close the west Car Lane (as shown below) in the Bus Traffic loop at the Herndon-Monroe Park & Ride facility in preparation for the installation of waterlines that will service the future Herndon Silver Line station now under construction in the median of the Dulles International Airport Access Highway (DIAAH). Buses will continue to use the dedicated Bus Lane.

Detour to the Dulles Toll Road: Drivers who wish to access the Dulles Toll Road should exit the Park & Ride facility and turn left onto Sunrise Valley Drive, then turn left onto the Fairfax County Parkway and take the exits to either the eastbound or westbound Dulles Toll Road.

The work will take place from 9 a.m. to 5 p.m. and continue into early June. Construction of the south pedestrian bridge and pavilion that will connect the Park & Ride to the Herndon Metrorail Station will follow the utility work and this area will remain an active construction site until further notice. The public will be informed in advance of any additional significant changes within the Herndon-Monroe Park & Ride facility.



A 24/7 emergency hotline is available for Dulles Corridor Metrorail Project construction-related issues:
 844-385-7245.

For general project information: www.dullesmetro.com or 703-572-0506.



May 10, 2016

CONTACT: Marcia McAllister
 T: 703-572-0506
 C: 571-730-9117
Marcia.McAllister@dullesmetro.com

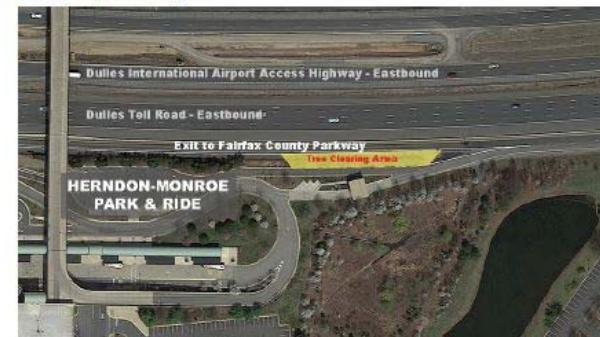
**Dulles Corridor Metrorail Project
 PHASE 2**

104

Tree and Brush Clearing Adjacent to Fairfax County Parkway Exit Ramp from Eastbound Dulles Toll Road

On or about Thursday, May 12 – May 16, Dulles Corridor Metrorail Project crews will be clearing trees and brush from the median located adjacent to the south edge of the Fairfax County Parkway exit ramp from the eastbound Dulles Toll Road. The work will take place during the day, between 9 a.m. and 5 p.m. The clearing work is necessary for the installation of storm water management facilities required for the Herndon Metrorail Station.

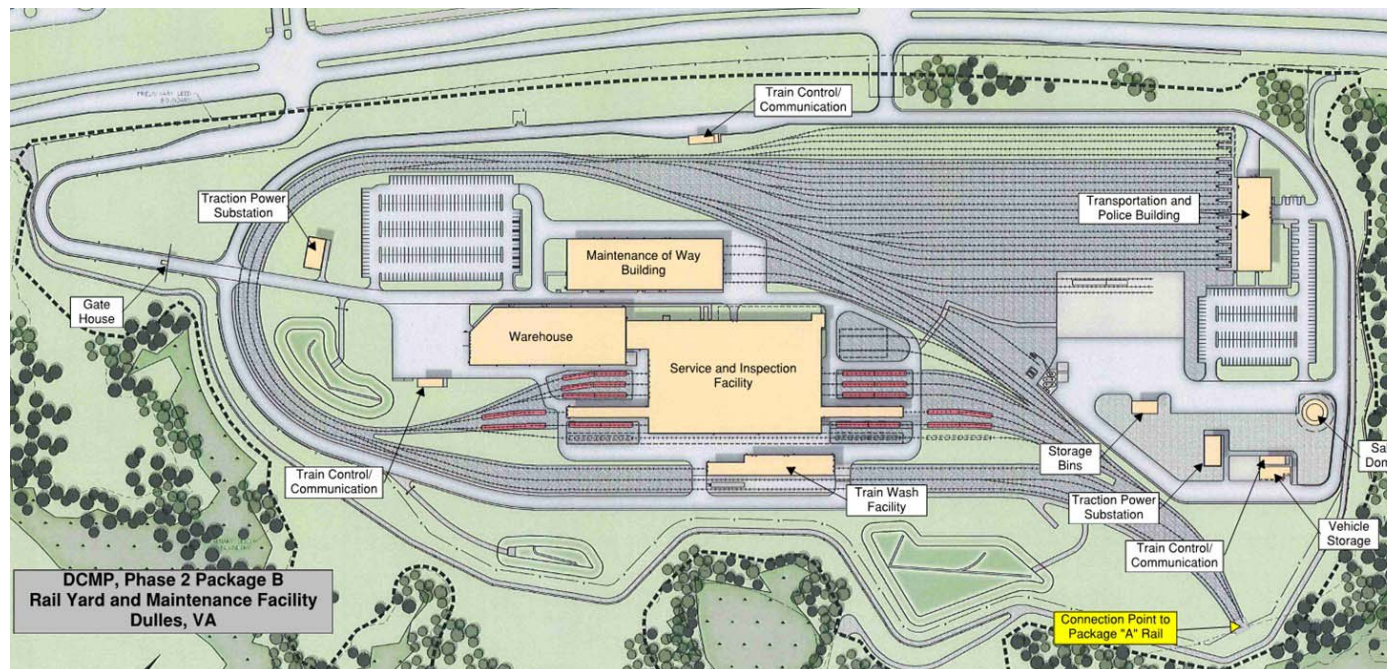
No lane or shoulder closures are required for this work, however, drivers are asked to use caution and remain attentive to all signage, large, slow-moving vehicles and the presence of flaggers while equipment crosses the exit ramp. All work is weather dependent and subject to change.



A 24/7 emergency hotline is available for Dulles Corridor Metrorail Project construction-related issues:
 844-385-7245. For general project information: www.dullesmetro.com or 703-572-0506.

Rail Yard & Maintenance Facility

- Built on airport property by Hensel Phelps, a Denver-based company
- Approximately 90 acres – largest in WMATA system
- Construction began in Summer 2015 and is expected to complete in Fall 2018
- 168 car capacity and will be used to maintain and store cars overnight



Phase 1: Impacts so far

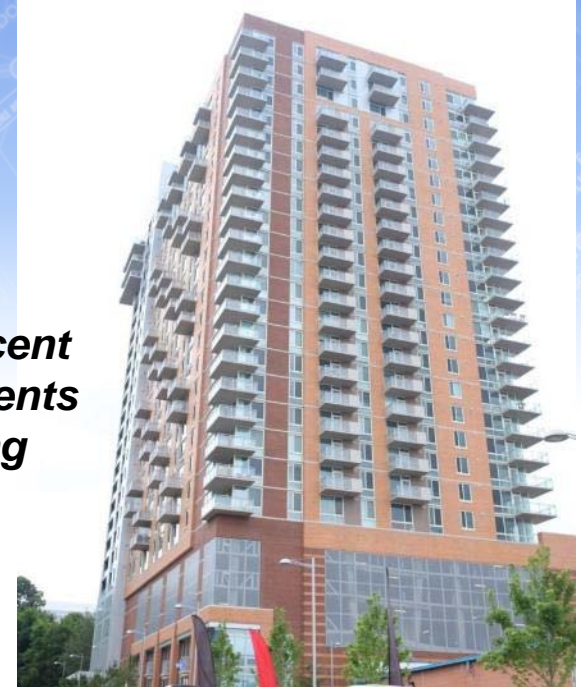
Mixed-use communities underway at all Phase 1 stations



Tyson's transit-oriented development already in place.



Tyson's Towers - Macerich



***The Ascent
Apartments
at Spring
Hill***



***Elan Tysons West
at Spring Hill***

Contact Information



198 Van Buren Street
Suite 300
Herndon, VA 20170

www.dullesmetro.com

www.mwaa.com